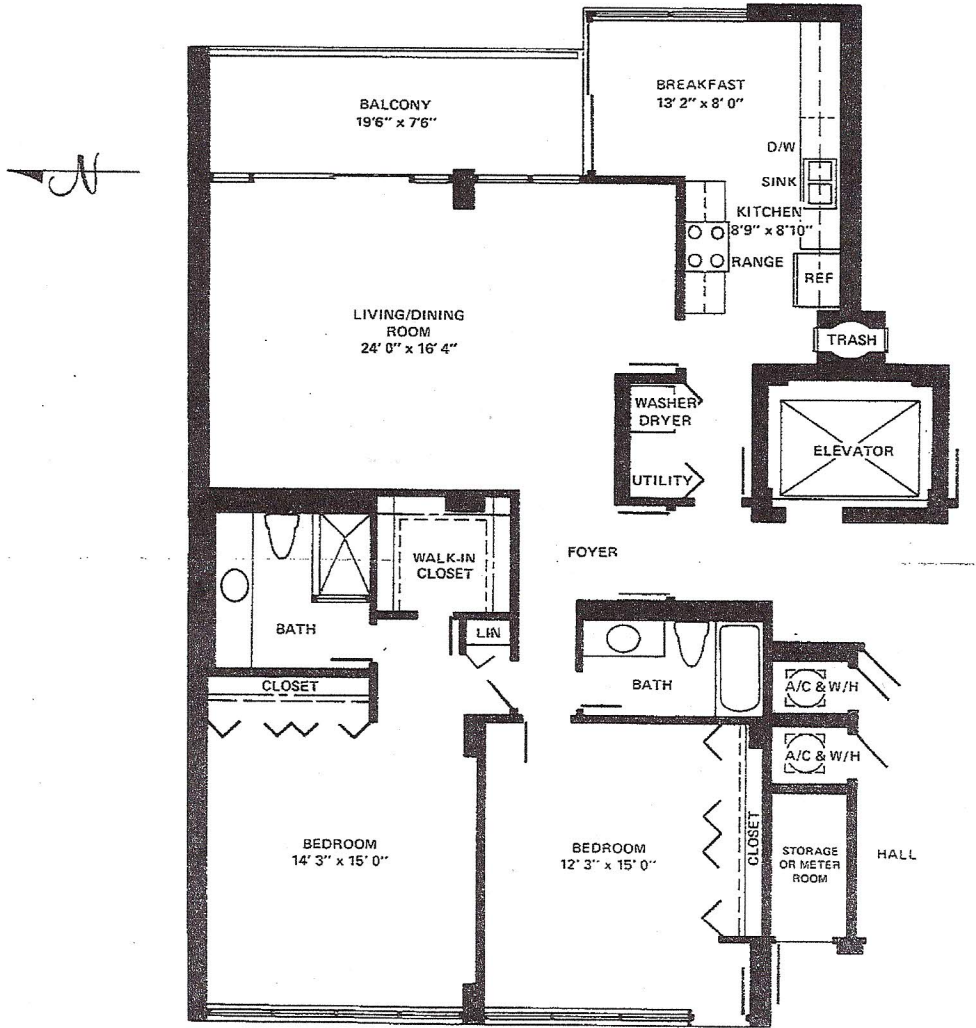
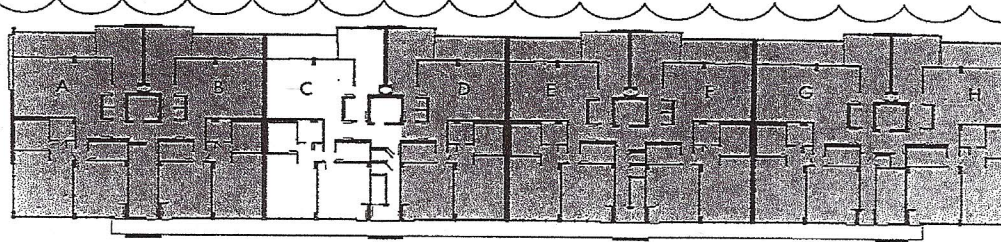


INTRACOASTAL WATERWAY



Every Apartment Home Includes:

- 2 Bedroom, 2 Bath Units, including Living/Dining Room, Breakfast Area in Kitchen
- Floor-to-Ceiling Tinted Tempered Glass Window Walls
- Individually Controlled Central Air Conditioning and Heating
- Total Electric Kitchens, Self-Cleaning Oven and Range, Refrigerator with Chilled Water and Ice Dispenser in Door, Dishwasher, Disposal and Water Heater—Luminous Ceiling Lighting
- Separate Foyer and Kitchen Entrances
- All Kitchens have Outside View
- Sliding door to Balcony—from Breakfast Area
- Individual Kitchen Trash Chute
- Washer/Dryer (separate units)
- Pantry—Laundry
- Oak Kitchen Cabinets
- Decorator-Coordinated Marble Baths
- Built-in Custom Cabinets and Vanities
- Gold Tone Appointments in Baths
- Moen Faucets and Shower Controls
- Walk-in Closets
- Marble Window Sills
- Decorative Rocker-Type Switches
- Sound Conditioned
- Interphone System to Lobbies
- 2 Balcony Terraces

By GESCO, Inc., Fort Lauderdale
 HASCAR, HANDLE, AIA, Fort Lauderdale
 F. J. WIZELER, Inc., Fort Lauderdale
 C. SELL & SON, Fort Lauderdale

Dimensions and areas are approximate and subject to field measurements and construction tolerances.